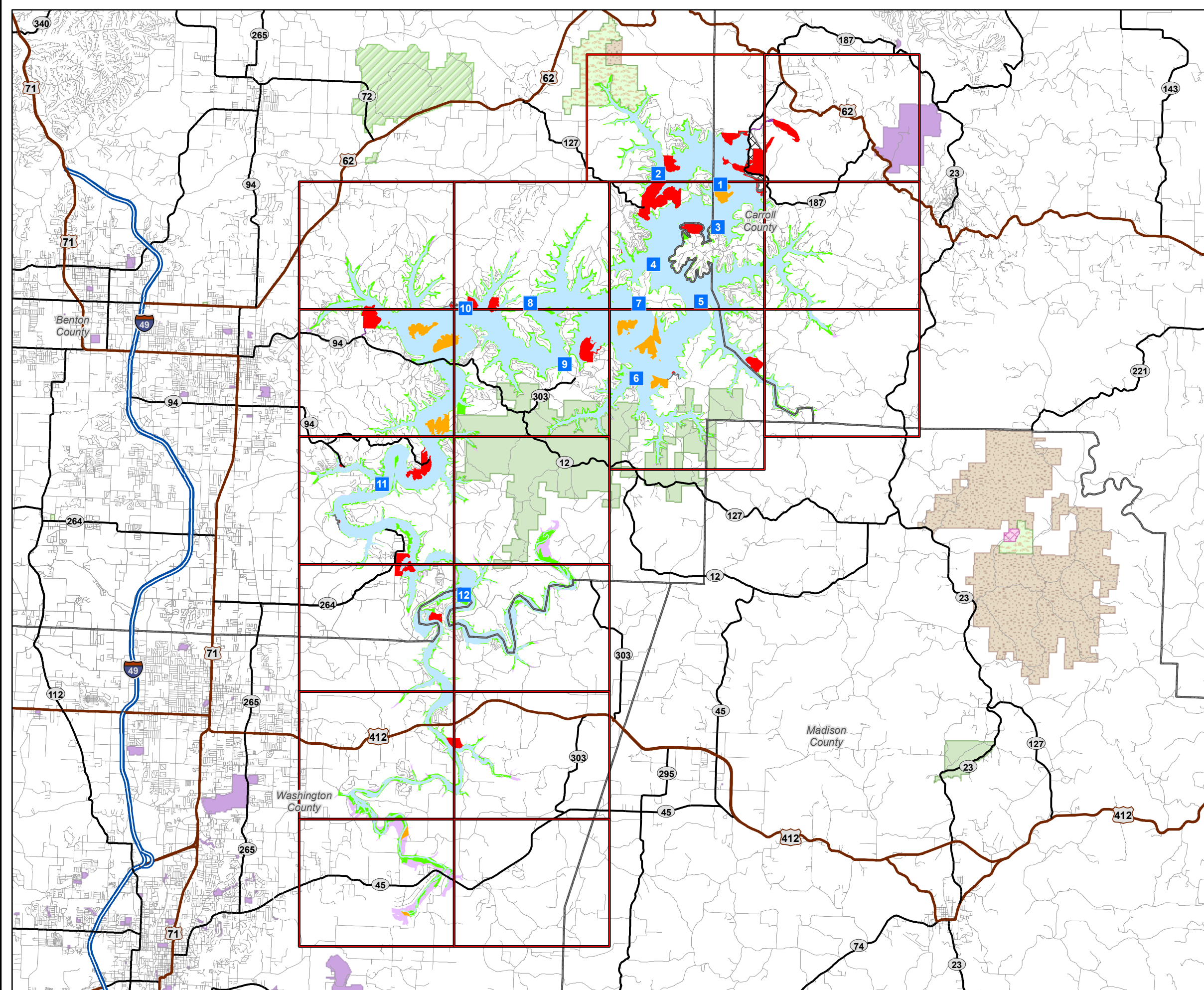


# MAP SHEET INDEX ALTERNATIVE ONE

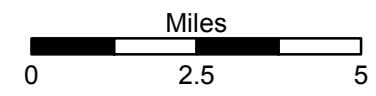


### Legend

- Point Markers
- Roads
- State Hwy
- US Hwy
- Interstate
- Counties
- City Park
- Local Park
- State Park
- National Park
- Natural Area
- Wildlife Management Area
- Flowage Easement
- Operation Easements
- LAND CLASSIFICATIONS**
- HIGH DENSITY RECREATION
- ENVIRONMENTALLY SENSITIVE
- WILDLIFE MANAGEMENT
- PROJECT OPERATIONS
- RESTRICTED
- OPEN RECREATION



## UPDATED MASTER PLAN BEAVER LAKE



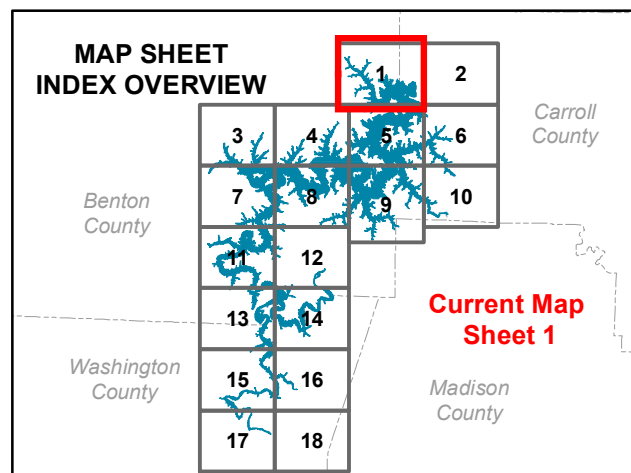
# ALTERNATIVE ONE MAXIMUM RESOURCE PROTECTION

## LAND CLASSIFICATION

- HIGH DENSITY RECREATION
- ENVIRONMENTALLY SENSITIVE
- WILDLIFE MANAGEMENT
- PROJECT OPERATIONS
- RESTRICTED
- OPEN RECREATION

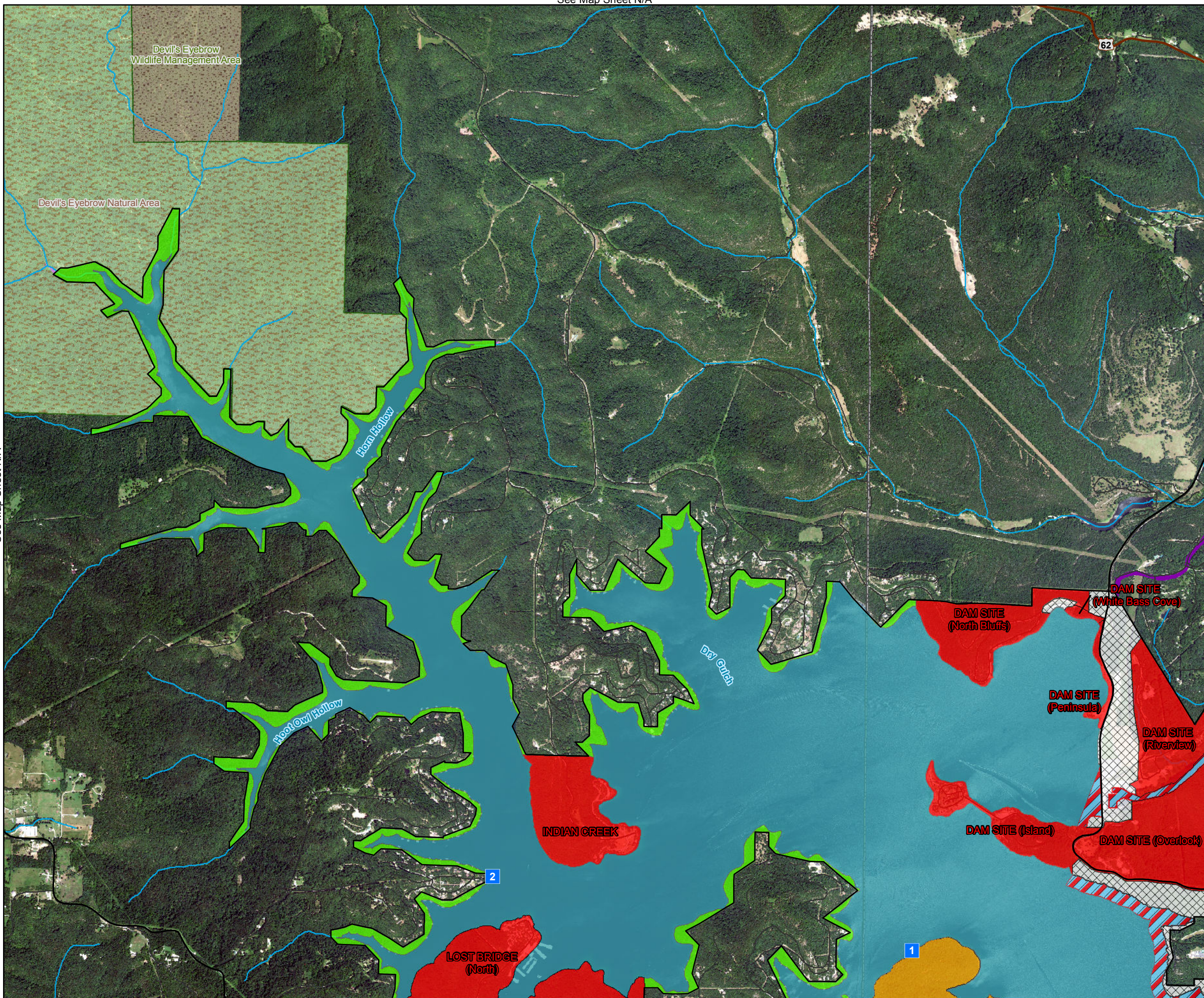
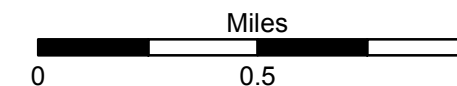
## Legend

- Point Markers
- Roads
- State Hwy
- US Hwy
- Interstate
- Rivers/Streams
- City Park
- Local Park
- State Park
- National Park
- Natural Area
- Wildlife Management Area
- Counties
- Flowage Easement
- Operation Easements
- USACE Boundary



## UPDATED MASTER PLAN BEAVER LAKE

Imagery Date: 2015



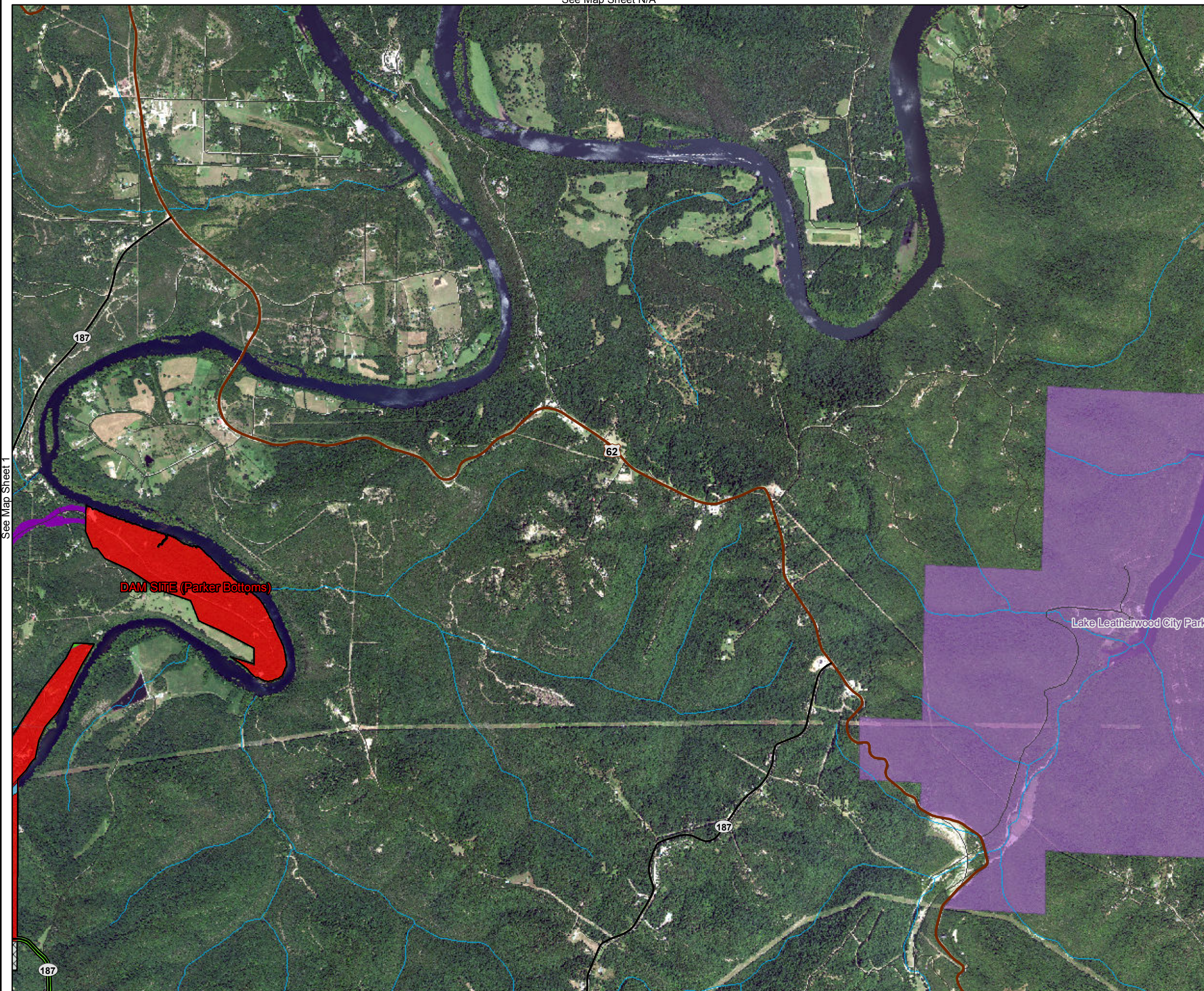
# ALTERNATIVE ONE MAXIMUM RESOURCE PROTECTION

## LAND CLASSIFICATION

- HIGH DENSITY RECREATION
- ENVIRONMENTALLY SENSITIVE
- WILDLIFE MANAGEMENT
- PROJECT OPERATIONS
- RESTRICTED
- OPEN RECREATION

## Legend

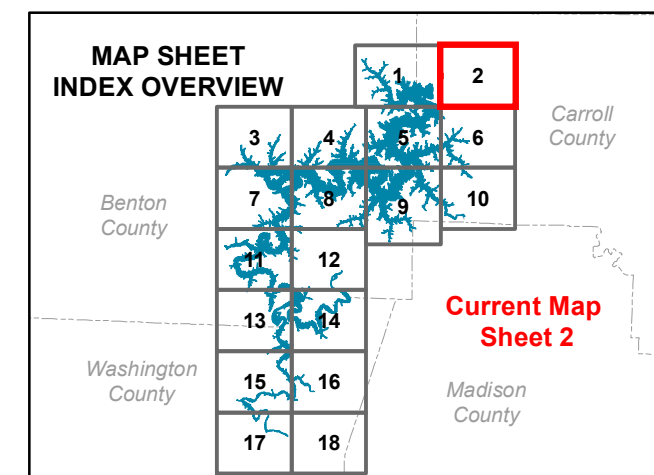
- Point Markers
- Roads
- State Hwy
- US Hwy
- Interstate
- Rivers/Streams
- City Park
- Local Park
- State Park
- National Park
- Natural Area
- Wildlife Management Area
- Counties
- Flowage Easement
- Operation Easements
- USACE Boundary



See Map Sheet 1

See Map Sheet N/A

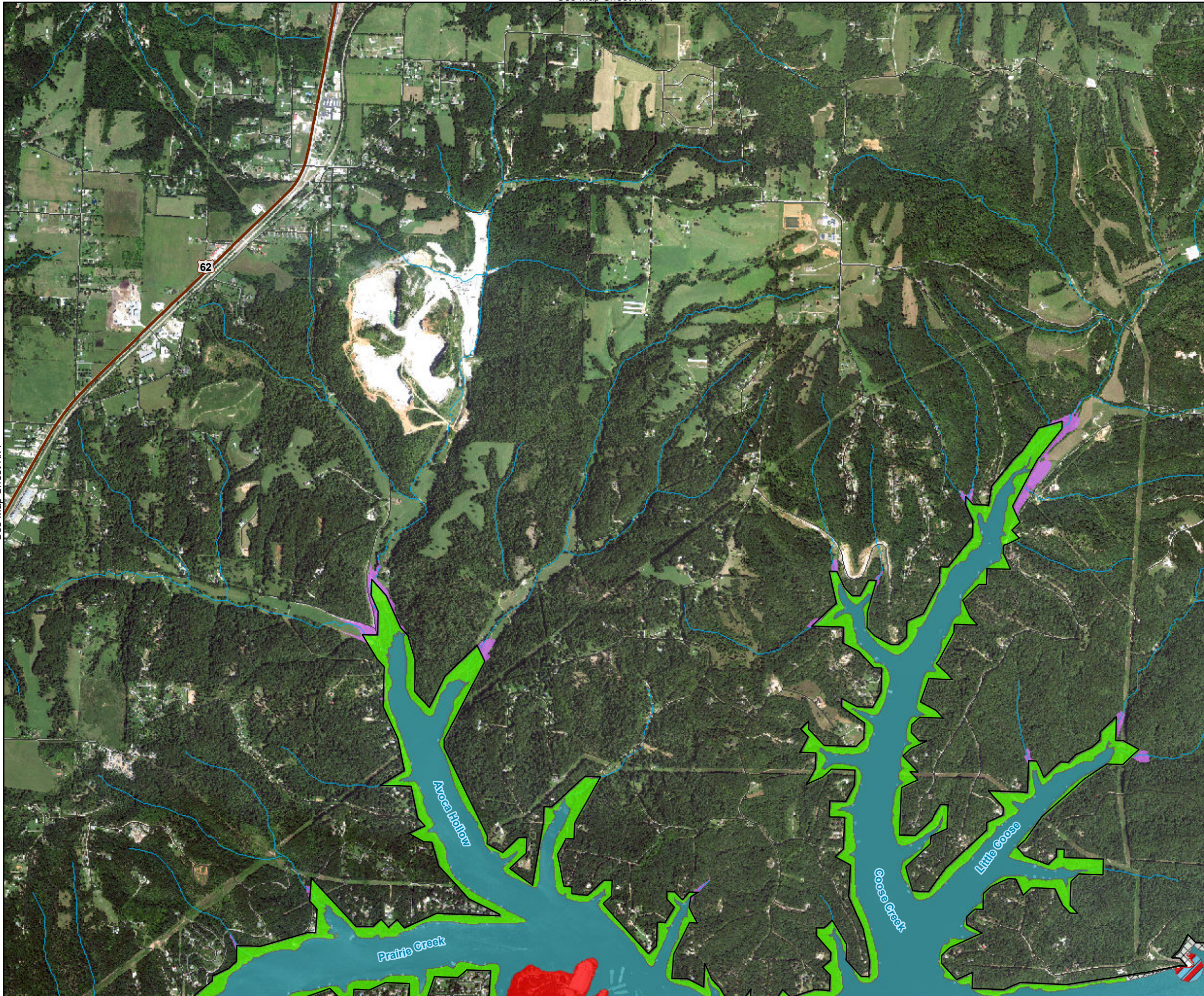
See Map Sheet 6



## UPDATED MASTER PLAN BEAVER LAKE

Imagery Date: 2015





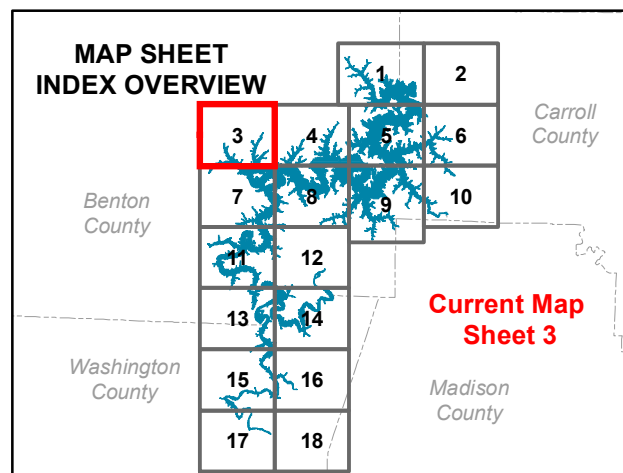
# ALTERNATIVE ONE MAXIMUM RESOURCE PROTECTION

## LAND CLASSIFICATION

- HIGH DENSITY RECREATION
- ENVIRONMENTALLY SENSITIVE
- WILDLIFE MANAGEMENT
- PROJECT OPERATIONS
- RESTRICTED
- OPEN RECREATION

## Legend

- Point Markers
- Roads
- State Hwy
- US Hwy
- Interstate
- Rivers/Streams
- City Park
- Local Park
- State Park
- National Park
- Natural Area
- Wildlife Management Area
- Counties
- Flowage Easement
- Operation Easements
- USACE Boundary



## UPDATED MASTER PLAN BEAVER LAKE

Imagery Date: 2015



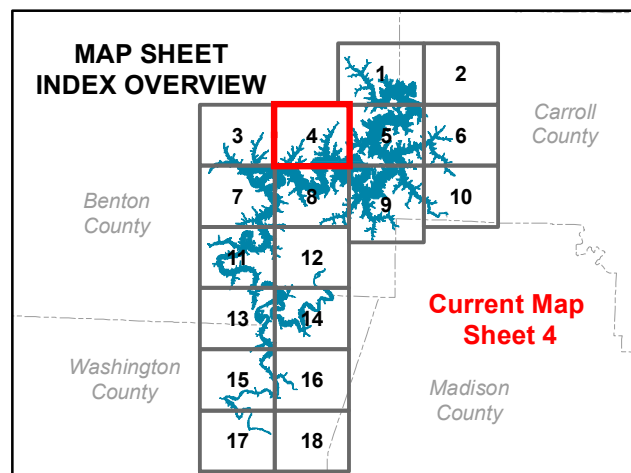
# ALTERNATIVE ONE MAXIMUM RESOURCE PROTECTION

## LAND CLASSIFICATION

- HIGH DENSITY RECREATION
- ENVIRONMENTALLY SENSITIVE
- WILDLIFE MANAGEMENT
- PROJECT OPERATIONS
- RESTRICTED
- OPEN RECREATION

## Legend

- Point Markers
- Roads
- State Hwy
- US Hwy
- Interstate
- Rivers/Streams
- City Park
- Local Park
- State Park
- National Park
- Natural Area
- Wildlife Management Area
- Counties
- Flowage Easement
- Operation Easements
- USACE Boundary



## UPDATED MASTER PLAN BEAVER LAKE

Imagery Date: 2015



See Map Sheet 3

See Map Sheet 5

See Map Sheet 8

ALPINE-FUTURE

VENTRIS

Ventris Hollow

Little Ventris

Fords Creek

Cedar Creek

10

8

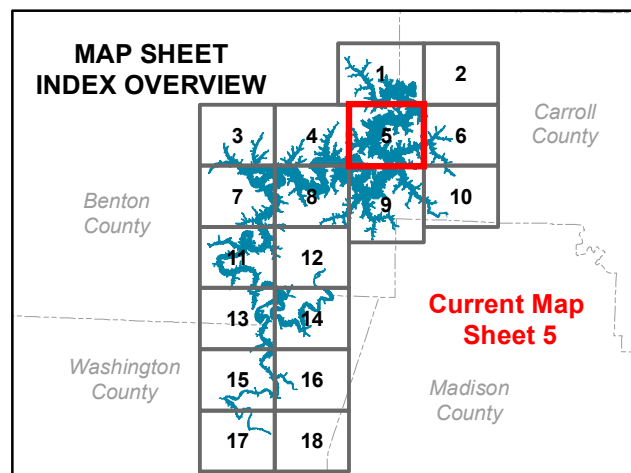
# ALTERNATIVE ONE MAXIMUM RESOURCE PROTECTION

## LAND CLASSIFICATION

- HIGH DENSITY RECREATION
- ENVIRONMENTALLY SENSITIVE
- WILDLIFE MANAGEMENT
- PROJECT OPERATIONS
- RESTRICTED
- OPEN RECREATION

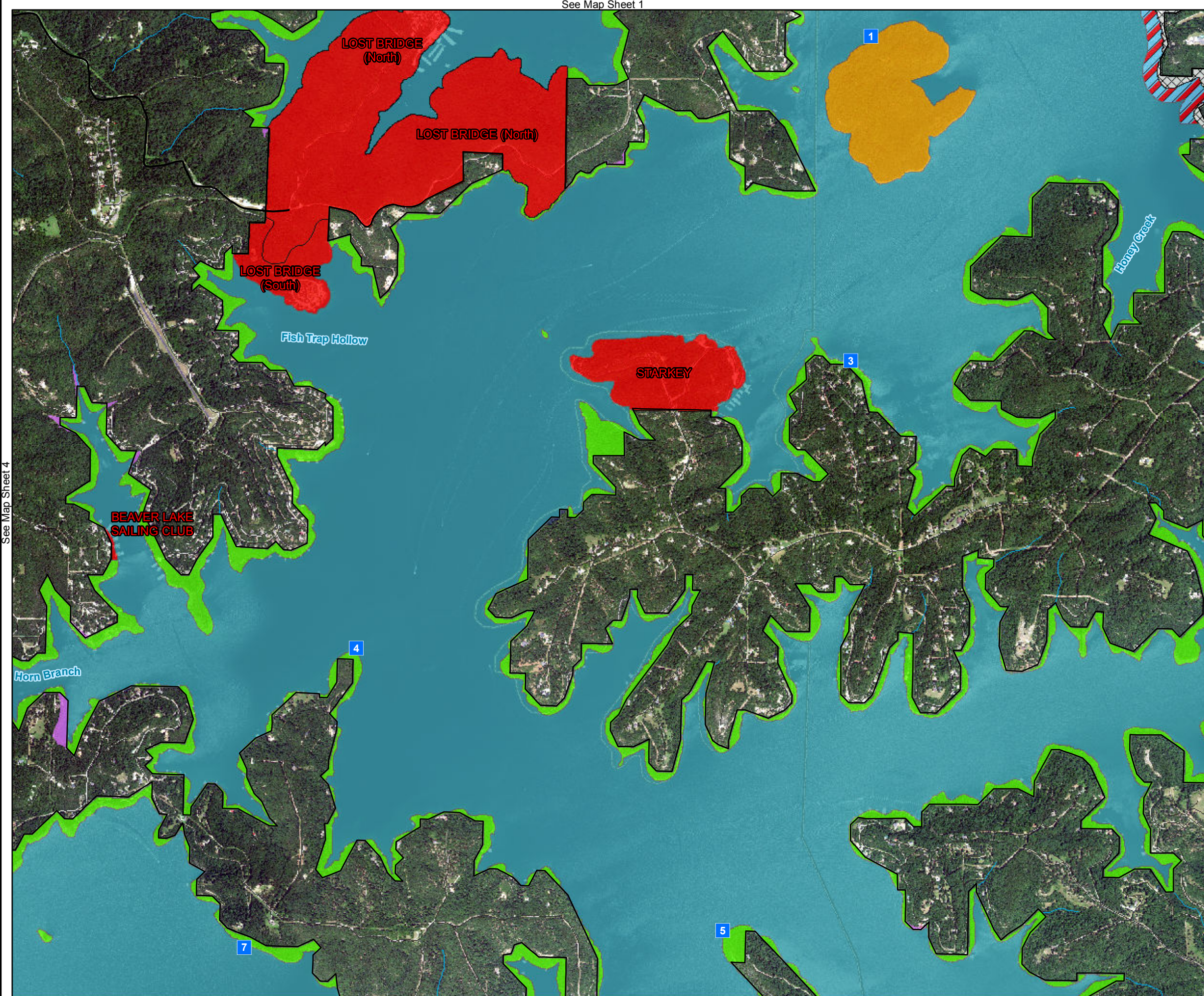
## Legend

- Point Markers
- Roads
- State Hwy
- US Hwy
- Interstate
- Rivers/Streams
- City Park
- Local Park
- State Park
- National Park
- Natural Area
- Wildlife Management Area
- Counties
- Flowage Easement
- Operation Easements
- USACE Boundary



## UPDATED MASTER PLAN BEAVER LAKE

Imagery Date: 2015



See Map Sheet 2

See Map Sheet 5

See Map Sheet N/A

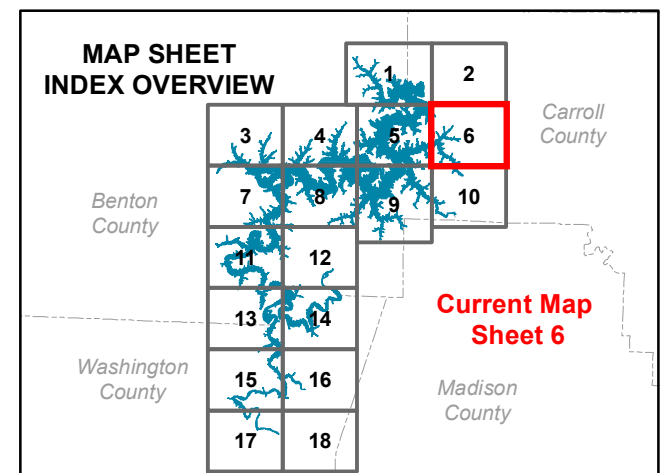
# ALTERNATIVE ONE MAXIMUM RESOURCE PROTECTION

## LAND CLASSIFICATION

- HIGH DENSITY RECREATION
- ENVIRONMENTALLY SENSITIVE
- WILDLIFE MANAGEMENT
- PROJECT OPERATIONS
- RESTRICTED
- OPEN RECREATION

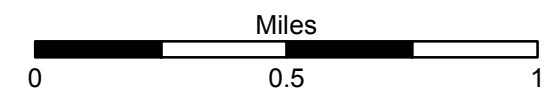
## Legend

- Point Markers
- Roads
- State Hwy
- US Hwy
- Interstate
- Rivers/Streams
- City Park
- Local Park
- State Park
- National Park
- Natural Area
- Wildlife Management Area
- Counties
- Flowage Easement
- Operation Easements
- USACE Boundary



## UPDATED MASTER PLAN BEAVER LAKE

Imagery Date: 2015



See Map Sheet 10

See Map Sheet 3



See Map Sheet N/A

See Map Sheet 8

See Map Sheet 11

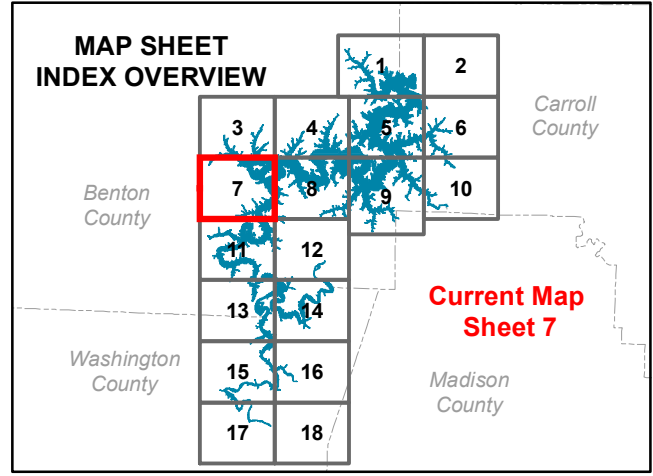
# ALTERNATIVE ONE MAXIMUM RESOURCE PROTECTION

**LAND CLASSIFICATION**

- HIGH DENSITY RECREATION
- ENVIRONMENTALLY SENSITIVE
- WILDLIFE MANAGEMENT
- PROJECT OPERATIONS
- RESTRICTED
- OPEN RECREATION

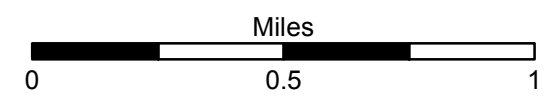
**Legend**

- Point Markers
- Roads
- State Hwy
- US Hwy
- Interstate
- Rivers/Streams
- City Park
- Local Park
- State Park
- National Park
- Natural Area
- Wildlife Management Area
- Counties
- Flowage Easement
- Operation Easements
- USACE Boundary



## UPDATED MASTER PLAN BEAVER LAKE

Imagery Date: 2015





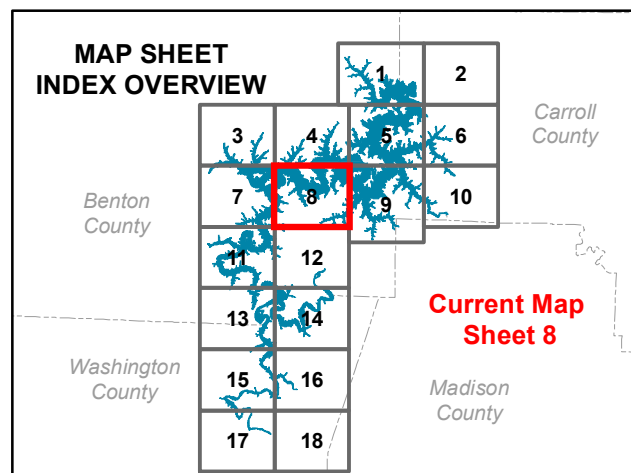
# ALTERNATIVE ONE MAXIMUM RESOURCE PROTECTION

## LAND CLASSIFICATION

- HIGH DENSITY RECREATION
- ENVIRONMENTALLY SENSITIVE
- WILDLIFE MANAGEMENT
- PROJECT OPERATIONS
- RESTRICTED
- OPEN RECREATION

## Legend

- Point Markers
- Roads
- State Hwy
- US Hwy
- Interstate
- Rivers/Streams
- City Park
- Local Park
- State Park
- National Park
- Natural Area
- Wildlife Management Area
- Counties
- Flowage Easement
- Operation Easements
- USACE Boundary



## UPDATED MASTER PLAN BEAVER LAKE

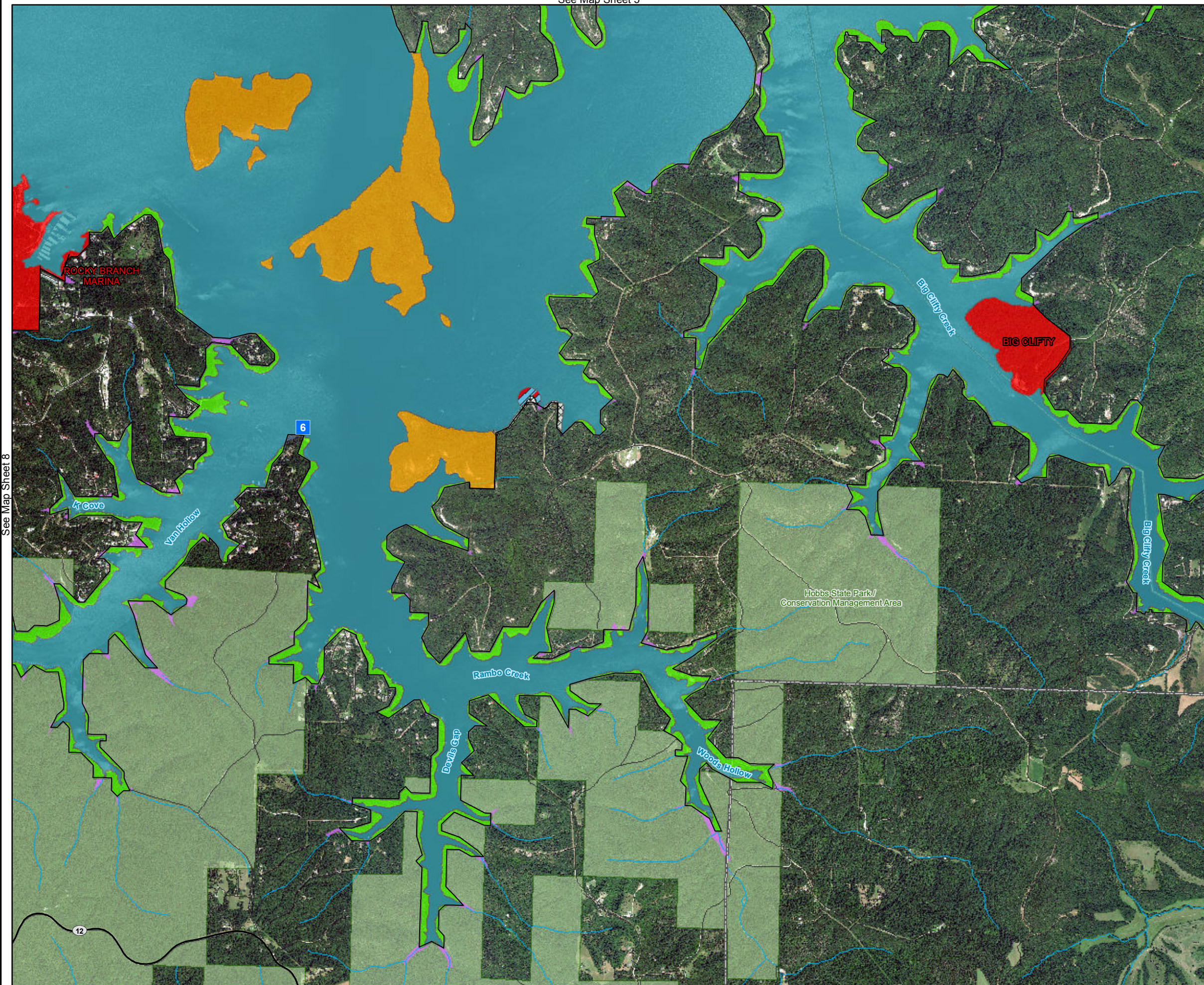
Imagery Date: 2015



See Map Sheet 7

See Map Sheet 9

See Map Sheet 5



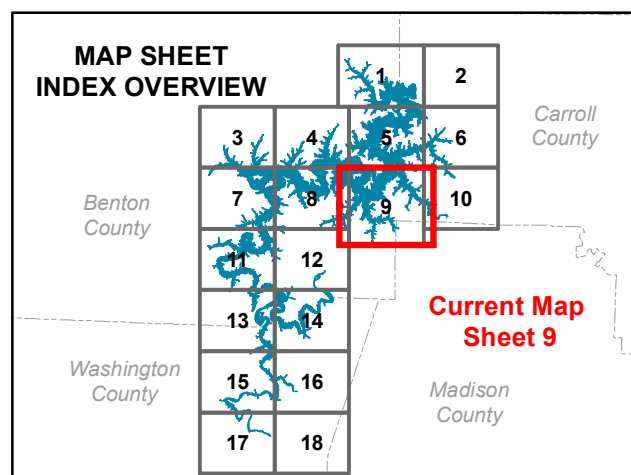
# ALTERNATIVE ONE MAXIMUM RESOURCE PROTECTION

## LAND CLASSIFICATION

- HIGH DENSITY RECREATION
- ENVIRONMENTALLY SENSITIVE
- WILDLIFE MANAGEMENT
- PROJECT OPERATIONS
- RESTRICTED
- OPEN RECREATION

## Legend

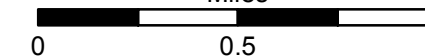
- Point Markers
- Roads
- State Hwy
- US Hwy
- Interstate
- Rivers/Streams
- City Park
- Local Park
- State Park
- National Park
- Natural Area
- Wildlife Management Area
- Counties
- Flowage Easement
- Operation Easements
- USACE Boundary



## UPDATED MASTER PLAN BEAVER LAKE

Imagery Date: 2015

Miles



See Map Sheet N/A

See Map Sheet 8

See Map Sheet 10

See Map Sheet 6

See Map Sheet 9

See Map Sheet N/A

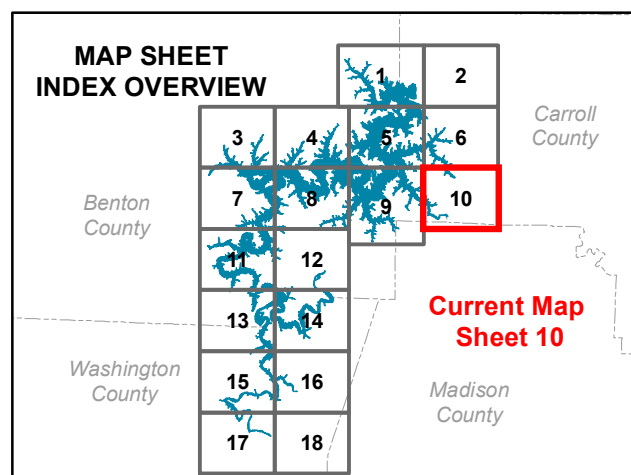
# ALTERNATIVE ONE MAXIMUM RESOURCE PROTECTION

## LAND CLASSIFICATION

- HIGH DENSITY RECREATION
- ENVIRONMENTALLY SENSITIVE
- WILDLIFE MANAGEMENT
- PROJECT OPERATIONS
- RESTRICTED
- OPEN RECREATION

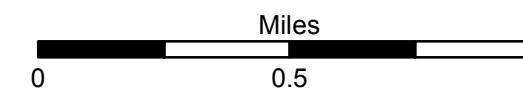
## Legend

- Point Markers
- Roads
- State Hwy
- US Hwy
- Interstate
- Rivers/Streams
- City Park
- Local Park
- State Park
- National Park
- Natural Area
- Wildlife Management Area
- Counties
- Flowage Easement
- Operation Easements
- USACE Boundary



## UPDATED MASTER PLAN BEAVER LAKE

Imagery Date: 2015



See Map Sheet N/A

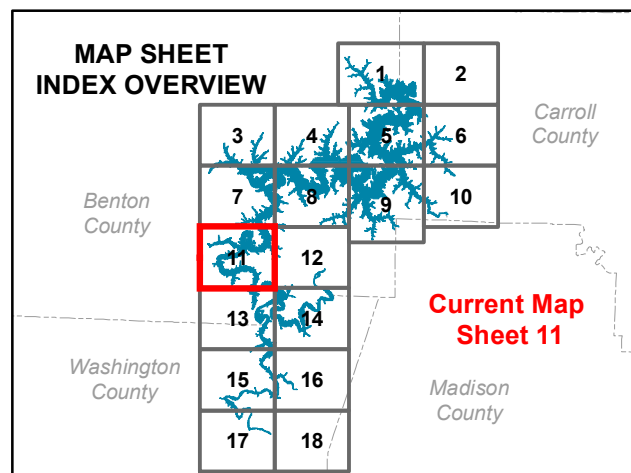
# ALTERNATIVE ONE MAXIMUM RESOURCE PROTECTION

## LAND CLASSIFICATION

- HIGH DENSITY RECREATION
- ENVIRONMENTALLY SENSITIVE
- WILDLIFE MANAGEMENT
- PROJECT OPERATIONS
- RESTRICTED
- OPEN RECREATION

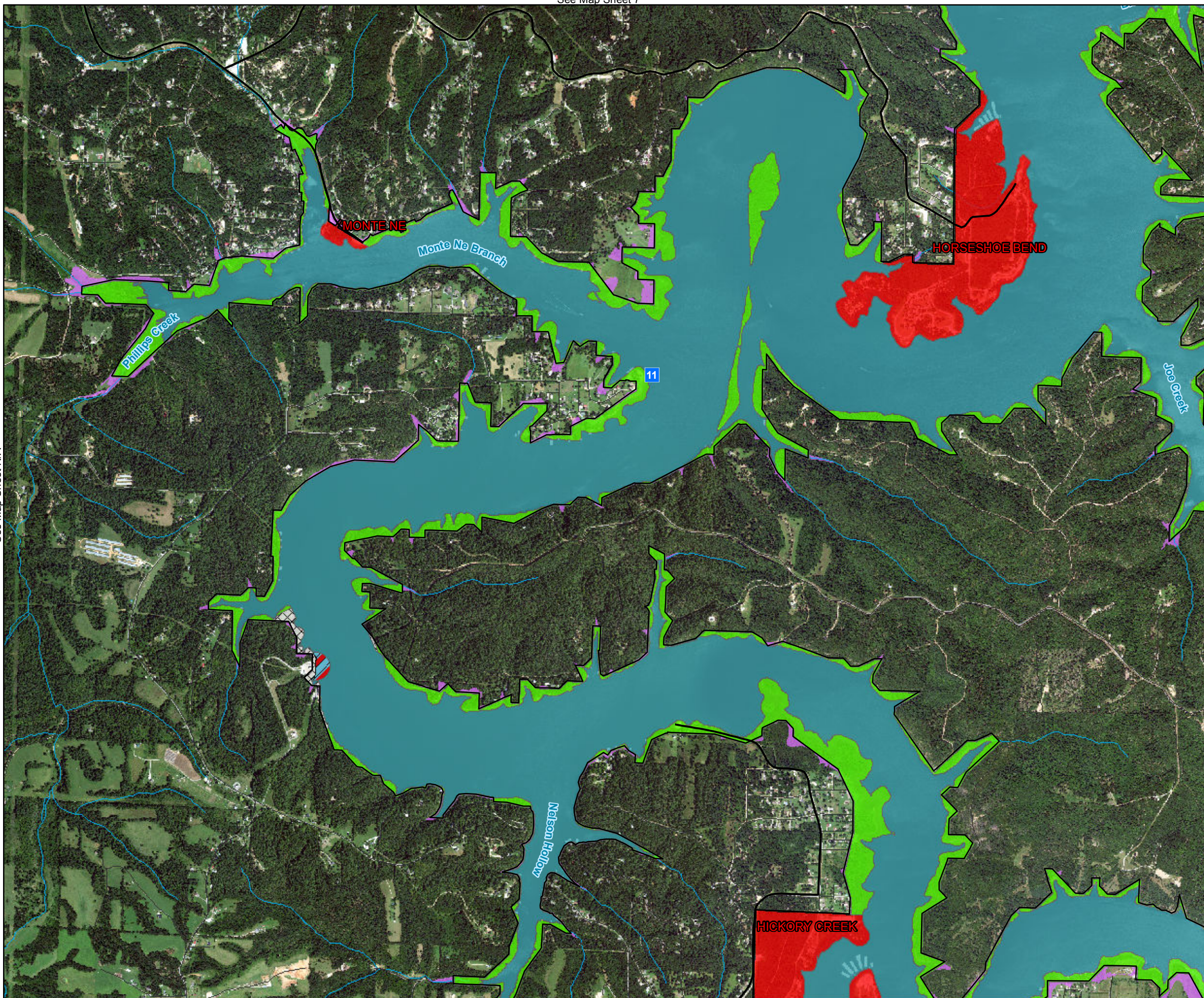
## Legend

- Point Markers
- Roads
- State Hwy
- US Hwy
- Interstate
- Rivers/Streams
- City Park
- Local Park
- State Park
- National Park
- Natural Area
- Wildlife Management Area
- Counties
- Flowage Easement
- Operation Easements
- USACE Boundary



## UPDATED MASTER PLAN BEAVER LAKE

Imagery Date: 2015



See Map Sheet 8

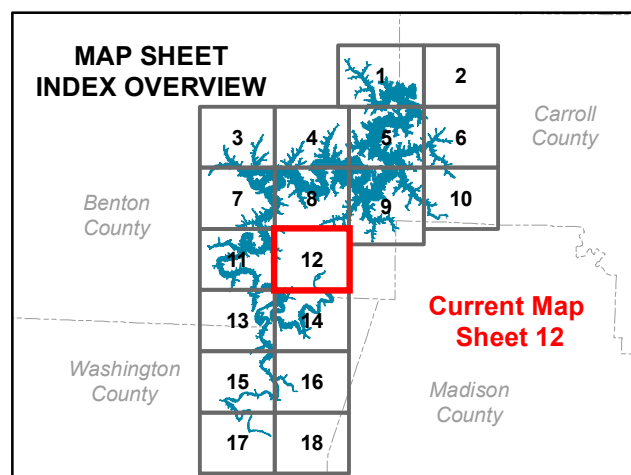
# ALTERNATIVE ONE MAXIMUM RESOURCE PROTECTION

## LAND CLASSIFICATION

- HIGH DENSITY RECREATION
- ENVIRONMENTALLY SENSITIVE
- WILDLIFE MANAGEMENT
- PROJECT OPERATIONS
- RESTRICTED
- OPEN RECREATION

## Legend

- Point Markers
- Roads
- State Hwy
- US Hwy
- Interstate
- Rivers/Streams
- City Park
- Local Park
- State Park
- National Park
- Natural Area
- Wildlife Management Area
- Counties
- Flowage Easement
- Operation Easements
- USACE Boundary



## UPDATED MASTER PLAN BEAVER LAKE

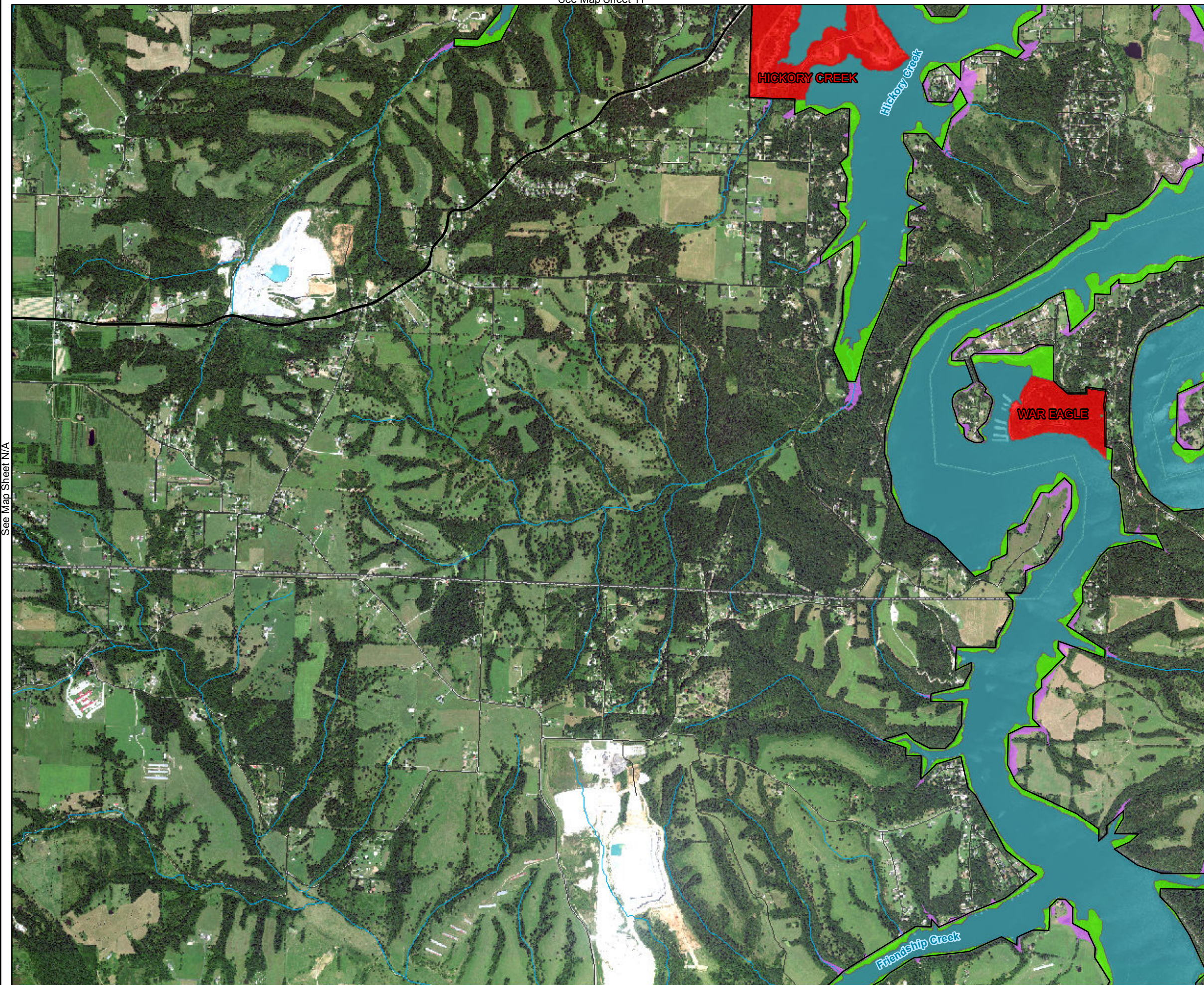
Imagery Date: 2015



See Map Sheet 14

See Map Sheet 11

See Map Sheet N/A



See Map Sheet N/A

See Map Sheet 14

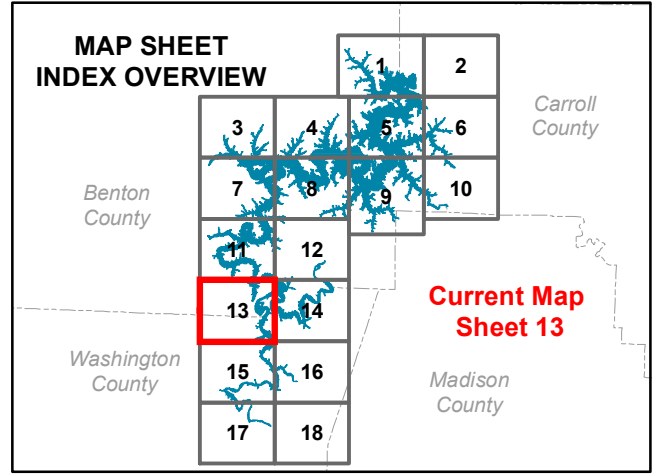
# ALTERNATIVE ONE MAXIMUM RESOURCE PROTECTION

**LAND CLASSIFICATION**

- HIGH DENSITY RECREATION
- ENVIRONMENTALLY SENSITIVE
- WILDLIFE MANAGEMENT
- PROJECT OPERATIONS
- RESTRICTED
- OPEN RECREATION

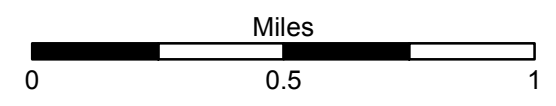
**Legend**

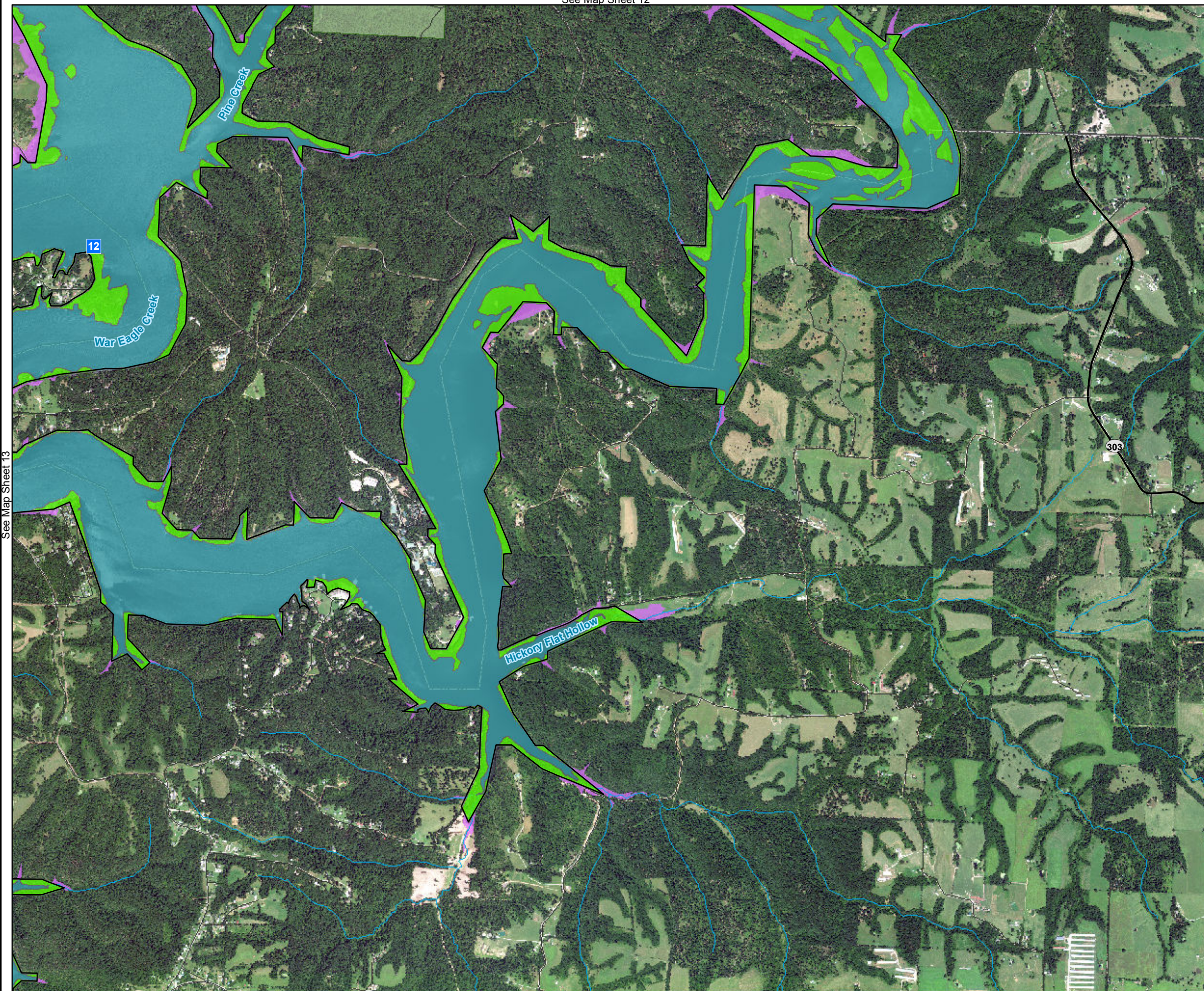
- Point Markers
- Roads
- State Hwy
- US Hwy
- Interstate
- Rivers/Streams
- City Park
- Local Park
- State Park
- National Park
- Natural Area
- Wildlife Management Area
- Counties
- Flowage Easement
- Operation Easements
- USACE Boundary



## UPDATED MASTER PLAN BEAVER LAKE

Imagery Date: 2015





See Map Sheet 13

See Map Sheet N/A

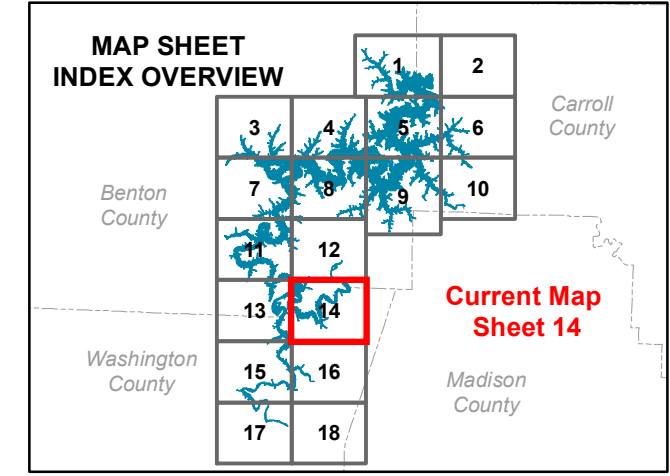
# ALTERNATIVE ONE MAXIMUM RESOURCE PROTECTION

**LAND CLASSIFICATION**

- HIGH DENSITY RECREATION
- ENVIRONMENTALLY SENSITIVE
- WILDLIFE MANAGEMENT
- PROJECT OPERATIONS
- RESTRICTED
- OPEN RECREATION

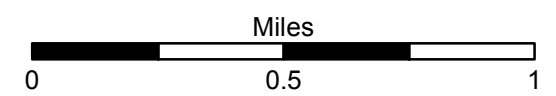
**Legend**

- Point Markers
- Roads
- State Hwy
- US Hwy
- Interstate
- Rivers/Streams
- City Park
- Local Park
- State Park
- National Park
- Natural Area
- Wildlife Management Area
- Counties
- Flowage Easement
- Operation Easements
- USACE Boundary



## UPDATED MASTER PLAN BEAVER LAKE

Imagery Date: 2015



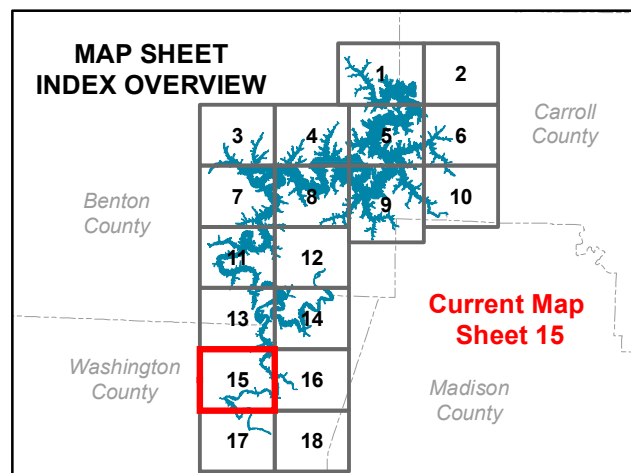
# ALTERNATIVE ONE MAXIMUM RESOURCE PROTECTION

## LAND CLASSIFICATION

- HIGH DENSITY RECREATION
- ENVIRONMENTALLY SENSITIVE
- WILDLIFE MANAGEMENT
- PROJECT OPERATIONS
- RESTRICTED
- OPEN RECREATION

## Legend

- Point Markers
- Roads
- State Hwy
- US Hwy
- Interstate
- Rivers/Streams
- City Park
- Local Park
- State Park
- National Park
- Natural Area
- Wildlife Management Area
- Counties
- Flowage Easement
- Operation Easements
- USACE Boundary

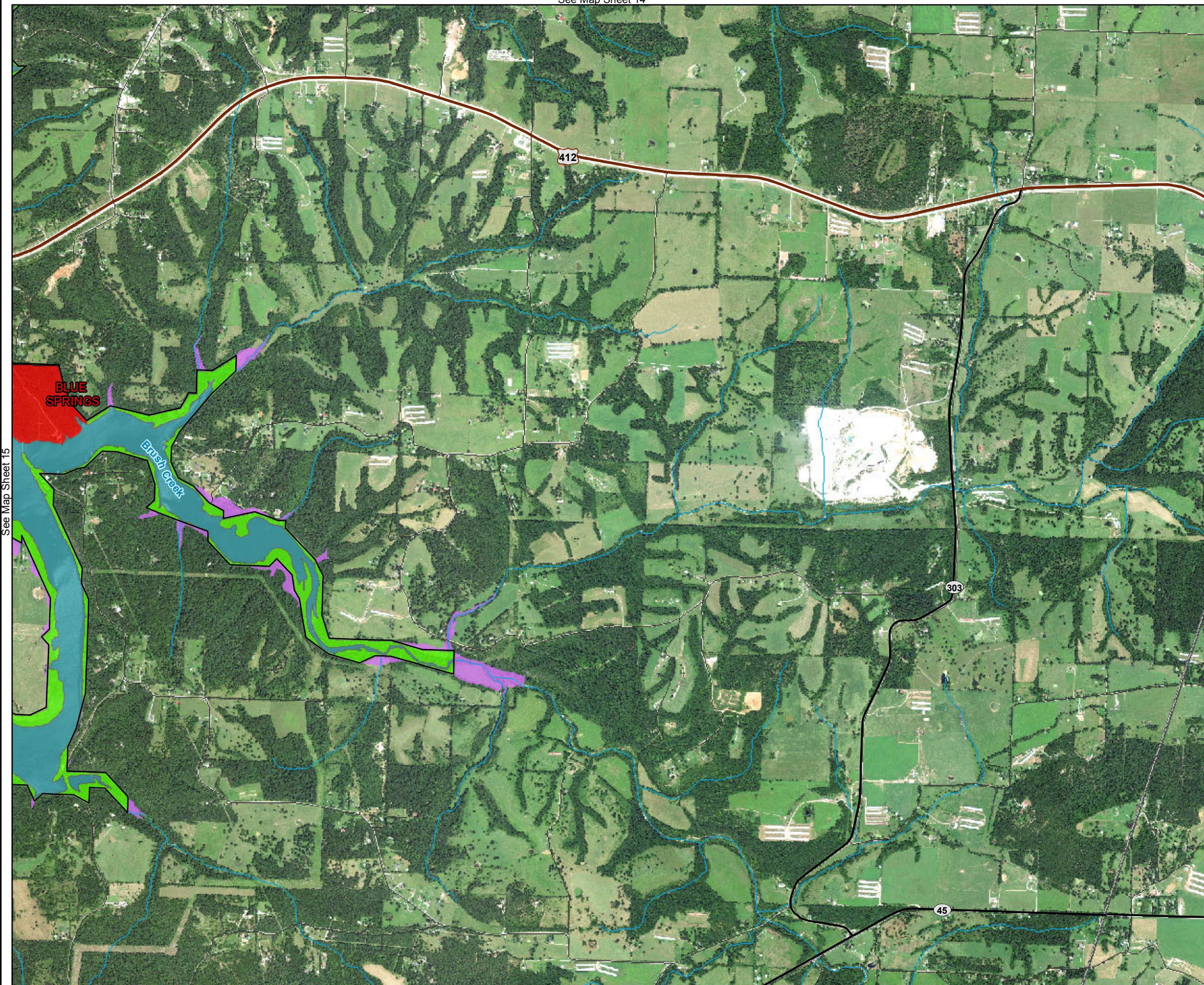


## UPDATED MASTER PLAN BEAVER LAKE

Imagery Date: 2015







See Map Sheet 15

See Map Sheet N/A

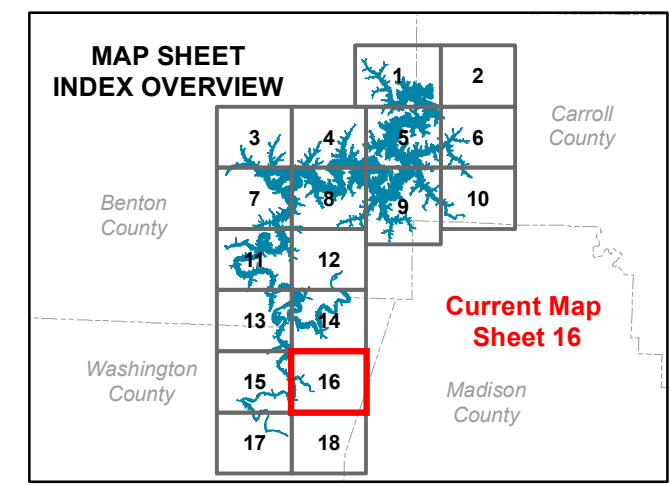
# ALTERNATIVE ONE MAXIMUM RESOURCE PROTECTION

**LAND CLASSIFICATION**

- HIGH DENSITY RECREATION
- ENVIRONMENTALLY SENSITIVE
- WILDLIFE MANAGEMENT
- PROJECT OPERATIONS
- RESTRICTED
- OPEN RECREATION

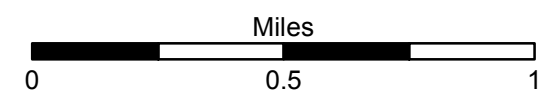
**Legend**

- Point Markers
- Roads
- State Hwy
- US Hwy
- Interstate
- Rivers/Streams
- City Park
- Local Park
- State Park
- National Park
- Natural Area
- Wildlife Management Area
- Counties
- Flowage Easement
- Operation Easements
- USACE Boundary



## UPDATED MASTER PLAN BEAVER LAKE

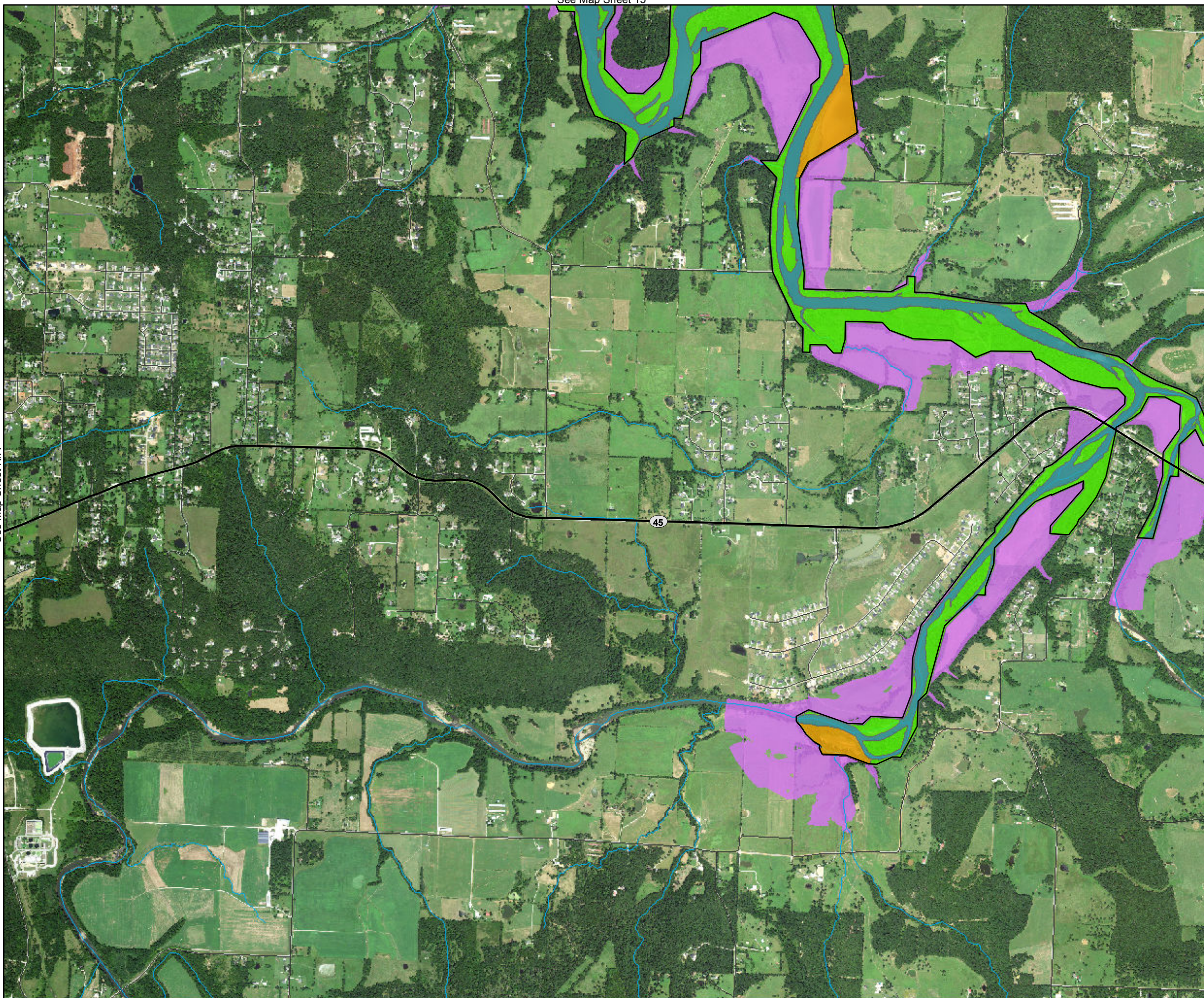
Imagery Date: 2015



See Map Sheet 15

See Map Sheet N/A

See Map Sheet 18



See Map Sheet N/A

# ALTERNATIVE ONE MAXIMUM RESOURCE PROTECTION

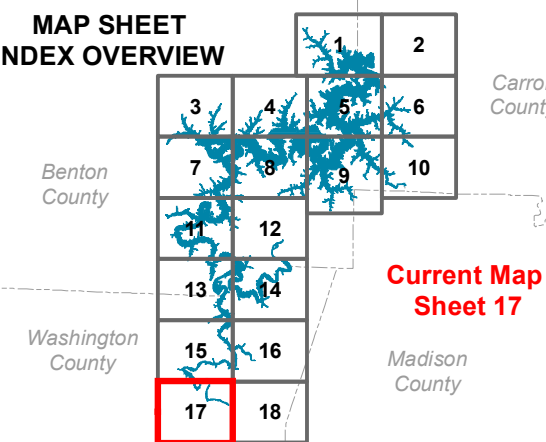
## LAND CLASSIFICATION

- HIGH DENSITY RECREATION
- ENVIRONMENTALLY SENSITIVE
- WILDLIFE MANAGEMENT
- PROJECT OPERATIONS
- RESTRICTED
- OPEN RECREATION

## Legend

- Point Markers
- Roads
- State Hwy
- US Hwy
- Interstate
- Rivers/Streams
- City Park
- Local Park
- State Park
- National Park
- Natural Area
- Wildlife Management Area
- Counties
- Flowage Easement
- Operation Easements
- USACE Boundary

## MAP SHEET INDEX OVERVIEW



## UPDATED MASTER PLAN BEAVER LAKE

Imagery Date: 2015



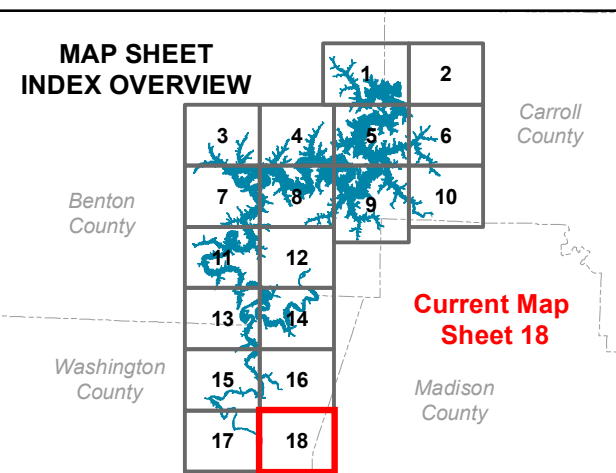
# ALTERNATIVE ONE MAXIMUM RESOURCE PROTECTION

### LAND CLASSIFICATION

- HIGH DENSITY RECREATION
- ENVIRONMENTALLY SENSITIVE
- WILDLIFE MANAGEMENT
- PROJECT OPERATIONS
- RESTRICTED
- OPEN RECREATION

### Legend

- Point Markers
- Roads
- State Hwy
- US Hwy
- Interstate
- Rivers/Streams
- City Park
- Local Park
- State Park
- National Park
- Natural Area
- Wildlife Management Area
- Counties
- Flowage Easement
- Operation Easements
- USACE Boundary



## UPDATED MASTER PLAN BEAVER LAKE

Imagery Date: 2015



See Map Sheet 17

See Map Sheet N/A